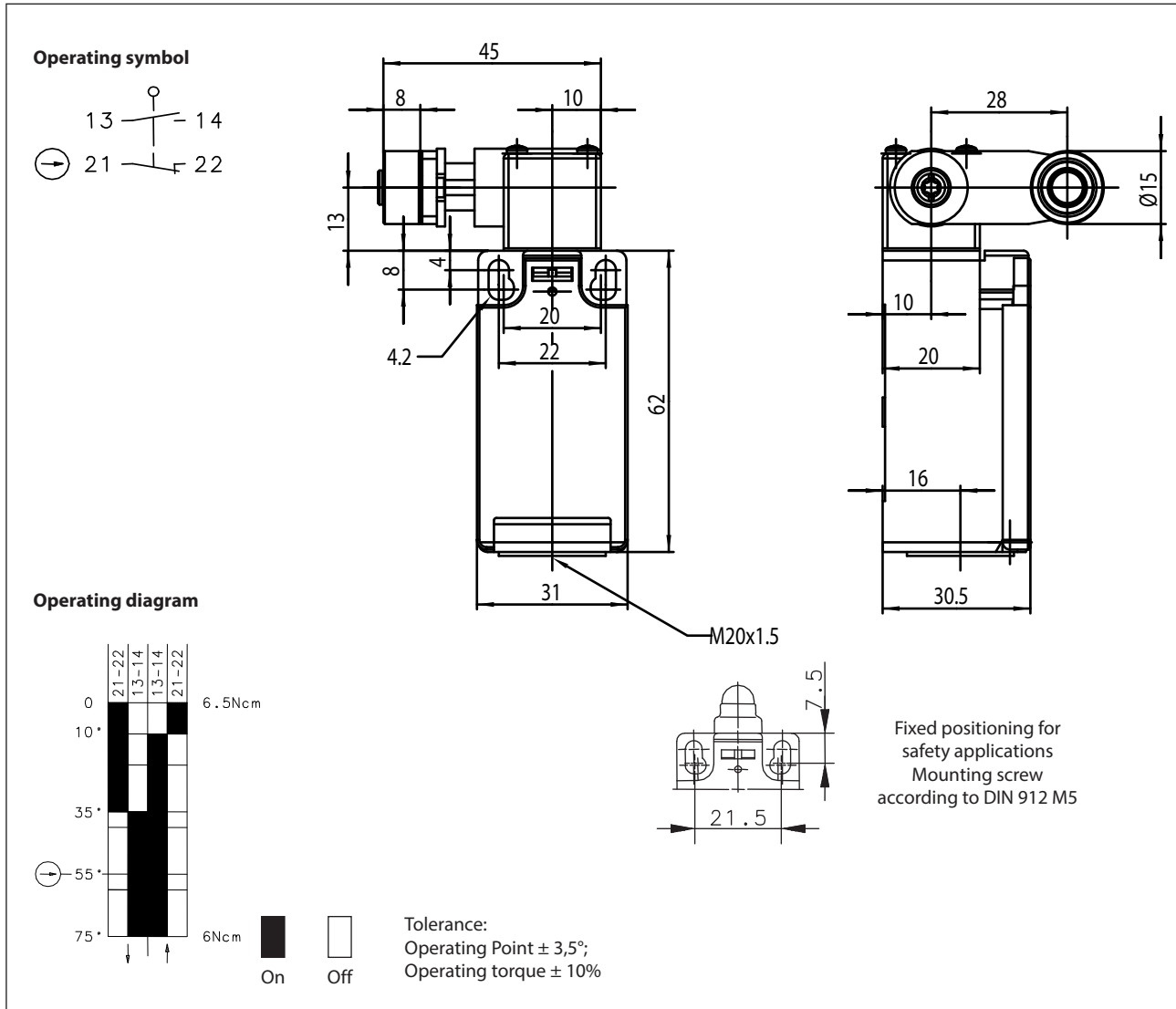


# Plastic bodied limit switch Series I88

Description **I88-SU1Z AH 90GR**

Article number **6186185747**



| Electrical Data                 |           |                                   |
|---------------------------------|-----------|-----------------------------------|
| Rated insulation voltage        | $U_i$     | 250 V AC                          |
| Conv. thermal current           | $I_{the}$ | 10 A                              |
| Rated operational voltage       | $U_e$     | 240 V                             |
| Utilization category            |           | AC-15, $U_e/I_e$ 240 V / 3 A      |
| Direct opening action           | $\ominus$ | acc. to IEC/EN 60947-5-1, annex K |
| Short-circuit protective device |           | Fuse 2 A gG                       |
| Protection class                |           | II, totally insulated             |

| Mechanical data          |   |
|--------------------------|---|
| Enclosure                | Thermoplastic, glass fibre reinforced (UL 94-V0)  |
| Cover                    | Thermoplastic, glass fibre reinforced (UL 94-V0)  |
| Actuator                 | Turret head (Zn-die cast), lever (st), roller (thermoplastic)                                 |
| Ambient air temperature  | -30° C ... +80° C   |
| Contact type             | 1 NC, 1 NO (Zb)   |
| Mechanical life          | 10 x 10 <sup>6</sup> operating cycles   |
| Switching frequency      | ≤ 100 / min.  |
| Assembly                 | 2 x M4  |
| Connection               | 4 screw connections (M3,5)  |
| Conductor cross-sections | Solid: 0,5 ... 1,5 mm <sup>2</sup> or<br>Litz wire with ferrules: 0,5 ... 1,5 mm <sup>2</sup> |
| Cable entrance           | 1 x M20 x 1,5   |
| Weight                   | ≈ 0,1 kg  |
| Installation position    | operator definable  |
| Protection type          | IP65 acc. to IEC/EN 60529; DIN VDE 0470 T1  |

| ID for safety engineering |                                       |
|---------------------------|---------------------------------------|
| B10d                      | 20 x 10 <sup>6</sup> switching cycles |

| Actuation  |
|--|
| <p>The actuating device is preferably started from 2 sides.<br/>By loosening the 4 screws the actuation assembly can be rotated in 90 degree increments such that 8 actuation directions are possible. The actuation assembly is to be again fastened to the housing using the 4 screws.</p> |

| Standards                                      |
|--|
| VDE 0660 T100, DIN EN 60947-1, IEC 60947-1     |
| VDE 0660 T200, DIN EN 60947-5-1, IEC 60947-5-1 |
| DIN EN ISO 13849-1                             |

| EU Conformity                |
|------------------------------|
| acc. to directive 2006/95/EC |

| Approvals                               |
|---|
| cCSA <sub>US</sub> A300 (same polarity) |

| Notes  |
|--|
| The degree of protection (IP code) specified applies solely to a property closed cover and the use of an equivalent cable gland with adequate cable. |