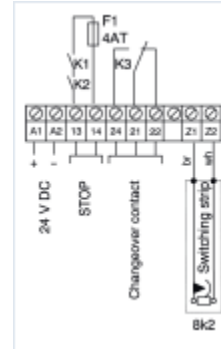


## HOUSING TYPE A

Article no.	<b>3002.5206Z</b>
Type	<b>252.06Z</b>
Performance Level according to EN ISO 13849-1:2008	<b>e / category 3</b>
Safety Integrity Level (SIL) according to EN 62061:2005	<b>3</b>
Functions Input	<b>1 switching strip</b>
Functions Output	<b>1 output with 2 relays each with 1 NC contact in series, forced</b>
Additional functions	<b>Changeover contact</b>
Supply voltage A1 – A2	<b>24 V DC</b>
Rated power	<b>3 VA</b>
Power pack potential-isolated	<b>yes</b>
Relay contacts 13 – 14; 21 – 24 max. switching voltage AC/DC	<b>250 V/24 V</b>
Relay contacts 13 – 14; 21 – 24 max. switching current AC/DC	<b>4 A/2 A</b>
Perm. operating temperature	<b>-20..+55 °C</b>
Housing dimensions (W x H x D) in mm	<b>45 x 75 x 120</b>
Degree of protection for housing/contacts	<b>IP 40/IP 20</b>
Weight	<b>390 g</b>
Tests	<b>EN ISO 13849-1:2008, EN 62061:2005</b>



**Wiring diagram**

Products Switchgear Housing type A Housing type A: 3002.5206Z