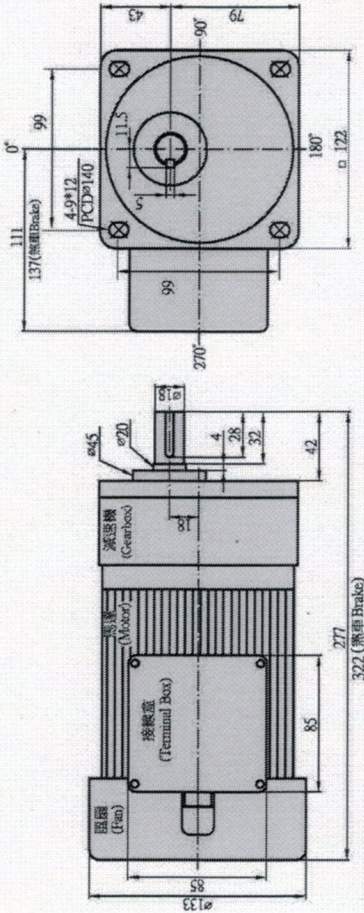
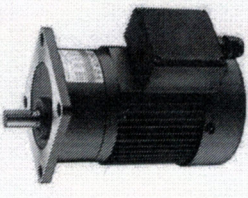


SESAME MOTOR
TAIWAN
DEALER + VICINO DE

G11V-200W SINGLE/3-PHASE V-CASING TYPE PRECISION GEAR MOTOR

立式單相、三相齒輪馬達
立式標準型馬達的接線盒位置在270°
Terminal box position: at 270° for V-casing type.



馬力 (KW)	全負荷電流 Full Load Current (amp)						全負荷迴轉數 Full Load Running (rpm)							
	三相 (3 Phase)		單相 (1 Phase)		220V		50HZ		60HZ		1400		1700	
200W	1.28	0.72	0.66	4.65	3.5	2.3	1.93	60	75	90	100	110	120	130
◎ 齒輪減速馬達性能表 GEAR MOTOR SPECIFICATION														
減速比 Gear Ratio	3	5	7.5	10	15	20	25	30	40	50	60	75	90	110
出力同歩 回轉速 Output rpm	500	600	360	240	150	180	100	120	75	90	60	72	50	60
馬達額定 輸出轉矩 Output Torque 單位: kg.m	0.36	0.31	0.60	0.52	0.90	0.75	1.19	1.02	1.79	1.53	2.10	1.80	2.63	2.25

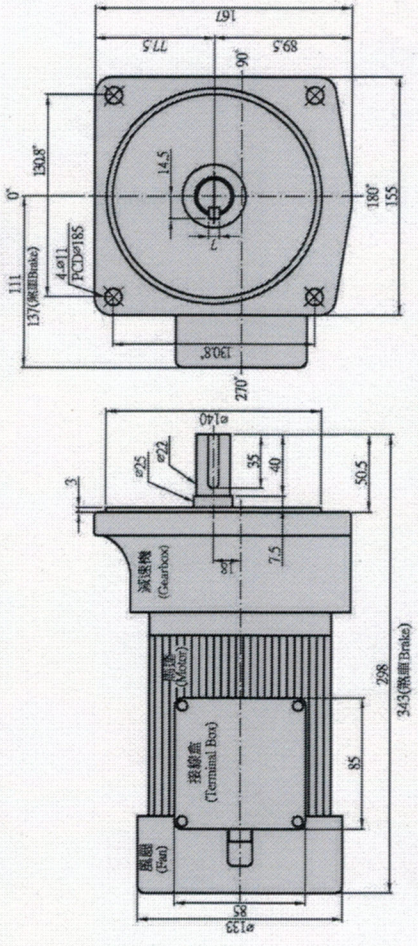
Products due to human error, natural disasters or other factors lead to poor or damaged, will not be covered under warranty. 產品因人為因素或自然因素導致不良或損壞，不在保單範圍內。

PRECISION GEAR MOTOR

立式100W V-Casing Types 立式200W V-Casing Types 立式400W V-Casing Types 立式750W V-Casing Types 立式1500W V-Casing Types 立式2200W V-Casing Types 臥式100W Foot Mount Types 臥式200W Foot Mount Types 臥式400W Foot Mount Types 臥式750W Foot Mount Types 臥式1500W Foot Mount Types 臥式2200W Foot Mount Types

G12V-200W SINGLE/3-PHASE V-CASING TYPE PRECISION GEAR MOTOR

立式單相、三相齒輪馬達
立式標準型馬達的接線盒位置在270°
Terminal box position: at 270° for V-casing type.



馬力 (KW)	全負荷電流 Full Load Current (amp)						全負荷迴轉數 Full Load Running (rpm)							
	三相 (3 Phase)		單相 (1 Phase)		220V		50HZ		60HZ		1400		1700	
200W	1.28	0.72	0.66	4.65	3.5	2.3	1.93	60	75	90	100	110	120	130
◎ 齒輪減速馬達性能表 GEAR MOTOR SPECIFICATION														
減速比 Gear Ratio	3	5	7.5	10	15	20	25	30	40	50	60	75	90	110
出力同歩 回轉速 Output rpm	500	600	360	240	150	180	100	120	75	90	60	72	50	60
馬達額定 輸出轉矩 Output Torque 單位: kg.m	0.36	0.31	0.60	0.52	0.90	0.75	1.19	1.02	1.79	1.53	2.10	1.80	2.63	2.25