

- Compact, impact-resistant enclosure, also available in versions with integrated metal bracket for optimised installation of cable glands
- Customer-specific equipping with terminals, cable glands and miniature fuses
- IP66 degree of protection

E3

WebCode 8118B



R. STAHL Series 8118 terminal boxes are equipped, in accordance with customer specifications, with various series terminals and cable glands made from plastic or metal, if required also with miniature fuses. They are available in 3 design sizes and are made from glass fibre reinforced polyester resin.

	IECEX / ATEX					
Zone	0	1	2	20	21	22
Installation in		•	•		•	•

Selection Table						
Product Description	Ex e terminal box					
Ambient temperature	-40 °C ... +40 °C (T6)					
	-40 °C ... +55 °C (T5)					
Ambient temperature	-40°F ... +104°F (T6)					
	-40°F ... +131°F (T5)					
Figure	Product Type	Cable glands	Terminal	Terminal rail	Art. No.	Weight kg
	8118/112-047-0	2 x 8161/7-M20-1304 Polyamide cable gland, black (Provided separately) M20 x 1.5 (4 – 13 mm) 1 x 8290/3-M20 Polyamide stopping plug (Provided separately) M20 x 1.5	3 x WAGO 264-220 4-conductor, 2.5 mm ² , grey 1 x WAGO 264-727/999-950 4-conductor, 2.5 mm ² , green-yellow	15 x 70 mm (1x)	224642 ▲	0.360
	8118/122-504-0	3 x 8161/7-M25-1707 Polyamide cable gland, black (Provided separately) M25 x 1.5 (7 – 17 mm) 2 x 8290/3-M25 Polyamide stopping plug (Provided separately) M25 x 1.5	11 x Phoenix UT 4 2-conductor, 4 mm ² , grey 2 x Phoenix USLKG 5 2-conductor, 4 mm ² , green-yellow	35 x 50 mm (1x)	224644 ▲	0.610
	8118/132-542-0	4 x 8161/7-M25-1707 Polyamide cable gland, black (Provided separately) M25 x 1.5 (7 – 17 mm) 2 x 8290/3-M25 Polyamide stopping plug (Provided separately) M25 x 1.5	11 x Phoenix UT 4 2-conductor, 4 mm ² , grey 2 x Phoenix USLKG 5 2-conductor, 4 mm ² , green-yellow	35 x 50 mm (1x)	224646	0.890

Selection Table

Product Description	Ex e terminal box					
Ambient temperature	-20 °C ... +40 °C (T6)					
Ambient temperature	-20 °C ... +55 °C (T5)					
Ambient temperature	-4°F ... +104°F (T6)					
Ambient temperature	-4°F ... +131°F (T5)					
Figure	Product Type	Cable glands	Terminal	Terminal rail	Art. No.	Weight kg
	8118/122-199-K0125	1 x 8161/7-M25-1707 Polyamide cable gland, black M25 x 1.5 (7 – 17 mm) 1 x HSK-K-MZ-ExM25x1.5 Polyamide cable gland, black Union nut in aluminum, black M25 x 1.5 (13 – 18 mm)	4 x Phoenix UT 4 2-conductor, 4 mm ² , grey 1 x Phoenix UT 4-PE 2-conductor, 4 mm ² , green-yellow	35 x 50 mm (1x)	220336	0.580
Product Description	Ex e terminal box with earth plate					
Ambient temperature	-50 °C ... +40 °C (T6)					
Ambient temperature	-50 °C ... +55 °C (T5)					
Ambient temperature	-58°F ... +104°F (T6)					
Ambient temperature	-58°F ... +131°F (T5)					
Figure	Product Type	Cable glands	Terminal	Terminal rail	Art. No.	Weight kg
	8118/122-504-2	1 x 8290/3-M25 Polyamide stopping plug (Provided separately) M25 x 1.5 3 x Through hole without cable entry Ø 25 mm	5 x WAGO 2002-1301 3-conductor, 2.5 mm ² , grey 1 x WAGO 2002-1307 3-conductor, 2.5 mm ² , green-yellow	35 x 50 mm (1x)	202995	0.680
	8118/132-542-2	2 x 8290/3-M25 Polyamide stopping plug (Provided separately) M25 x 1.5 4 x Through hole without cable entry Ø 25 mm	7 x WAGO 2002-1401 4-conductor, 2.5 mm ² , grey 1 x WAGO 2002-1407 4-conductor, 2.5 mm ² , green-yellow	35 x 85 mm (1x)	202996	0.890
Product Description	Ex e terminal box with earth plate					
Ambient temperature	-50 °C ... +55 °C (T5)					
Ambient temperature	-50 °C ... +55 °C (T4)					
Ambient temperature	-50°F ... +131°F (T5)					
Ambient temperature	-50°F ... +131°F (T4)					
Figure	Product Type	Cable glands	Terminal	Terminal rail	Art. No.	Weight kg
	8118/122-331-GB	2 x 8290/3-M20 Polyamide stopping plug M20 x 1.5 2 x Through hole without cable entry Ø 20 mm	6 x Weidmüller WDU 2.5 2-conductor, 2.5 mm ² , beige 2 x Weidmüller WPE 4 2-conductor, 4 mm ² , green-yellow	35 x 50 mm (1x)	133117 ▲	0.720
	8118/122-305-GB	2 x 8290/3-M25 Polyamide stopping plug M25 x 1.5 2 x Through hole without cable entry Ø 25 mm	6 x Weidmüller WDU 2.5 2-conductor, 2.5 mm ² , beige 2 x Weidmüller WPE 4 2-conductor, 4 mm ² , green-yellow	35 x 50 mm (1x)	133123	0.720

Selection Table						
Product Description		Ex i terminal box				
Ambient temperature		-40 °C ... +75 °C (T6)				
Ambient temperature		-40°F ... +167°F (T6)				
Figure	Product Type	Cable glands	Terminal	Terminal rail	Art. No.	Weight kg
	8118/212-047-0	2 x 8161/8-M20-1304 Polyamide cable gland, blue (Provided separately) M20 x 1.5 (4 – 13 mm) 1 x 8290/3-M20 Polyamide stopping plug (Provided separately) M20 x 1.5	3 x WAGO 264-724 4-conductor, 2.5 mm ² , blue 1 x WAGO 264-220 4-conductor, 2.5 mm ² , grey	15 x 70 mm (1x)	224643 ▲	0.360
	8118/222-504-0	3 x 8161/8-M25-1707 Polyamide cable gland, blue (Provided separately) M25 x 1.5 (7 – 17 mm) 2 x 8290/3-M25 Polyamide stopping plug (Provided separately) M25 x 1.5	9 x Phoenix UT 4 BU 2-conductor, 4 mm ² , blue 2 x Phoenix UT 4 2-conductor, 4 mm ² , grey	35 x 50 mm (1x)	224645 ■	0.610

"—" = marking for installation option
 Prices include enclosure, equipped with terminals
 Cable glands and stopping plug are included separately

Technical Data				
Variant	Ex e terminal box T6	Ex e terminal box with earth plate T6	Ex e terminal box with earth plate T5	Ex i terminal box T6
Explosion Protection				
Scope of validity	European Union (ATEX) IECEX	IECEX European Union (ATEX)	IECEX European Union (ATEX)	IECEX European Union (ATEX)
IECEX gas explosion protection	Ex eb IIC T6 ... T5 Gb	Ex eb IIC T6 ... T5 Gb	Ex eb IIC T5 ... T4 Gb	Ex ia ib IIC T6 Gb
IECEX dust explosion protection	Ex tb IIIC T80 °C / T95 °C Db	Ex tb IIIC T80 °C / T95 °C Db	Ex tb IIIC T95 °C / T130 °C Db	Ex tb IIIC T80 °C Db
ATEX gas explosion protection	Ⓢ II 2 G Ex eb IIC T6 ... T5 Gb	Ⓢ II 2 G Ex eb IIC T6 ... T5 Gb	Ⓢ II 2 G Ex eb IIC T5 ... T4 Gb	Ⓢ II 2 G Ex ia ib IIC T6 Gb
ATEX dust explosion protection	Ⓢ II 2 D Ex tb IIIC T80 °C / T95 °C Db	Ⓢ II 2 D Ex tb IIIC T80 °C / T95 °C Db	Ⓢ II 2 D Ex tb IIIC T95 °C / T130 °C Db	Ⓢ II 2 D Ex tb IIIC T80 °C Db
Certificates	ATEX (PTB), Brazil (ULB), China (NEPSI), IECEX (PTB), Korea (KTL)	ATEX (PTB), Brazil (ULB), China (NEPSI), IECEX (PTB), Korea (KTL)	ATEX (PTB), Brazil (ULB), China (NEPSI), IECEX (PTB), Korea (KTL)	ATEX (PTB), Brazil (ULB), China (NEPSI), IECEX (PTB)
Notes	For product label, see scope of validity.			
Mechanical Data				
Enclosure material	Polyester resin, Glass fibre reinforced	Polyester resin, Glass fibre reinforced	Polyester resin, Glass fibre reinforced	Polyester resin, Glass fibre reinforced
Silicone-free	No	No	No	No

Max. number of conductors




Enclosure size	Conductor cross-section				
	1.5 mm ²	2.5 mm ²	4 mm ²	6 mm ²	10 mm ²
8118/112, 8118/114	at 3 A: 16 ^{*)} at 6 A: 16 ^{*)} at 10 A: 16 ^{*)} at 16 A: 6 ^{*)}	at 3 A: any at 6 A: 12 ^{*)} at 10 A: 12 ^{*)} at 16 A: 12 ^{*)} at 20 A: 6 ^{*)}	at 3 A: any at 6 A: any at 10 A: 12 ^{*)} at 16 A: 12 ^{*)} at 20 A: 12 ^{*)} at 25 A: 8 ^{*)}	-	-
8118/122, 8118/124	at 3 A: 26 ^{*)} at 6 A: 26 ^{*)} at 10 A: 26 ^{*)} at 16 A: 6 ^{*)}	at 3 A: any at 6 A: 26 ^{*)} at 10 A: 26 ^{*)} at 16 A: 14 ^{*)} at 20 A: 6 ^{*)}	at 3 A: any at 6 A: any at 10 A: 22 ^{*)} at 16 A: 22 ^{*)} at 20 A: 22 ^{*)} at 25 A: 8 ^{*)}	at 3 A: any at 6 A: any at 10 A: any at 16 A: 20 ^{*)} at 20 A: 20 ^{*)} at 25 A: 20 ^{*)} at 35 A: 4 ^{*)}	-
8118/132, 8118/134	at 3 A: 36 ^{*)} at 6 A: 36 ^{*)} at 10 A: 26 ^{*)} at 16 A: 6 ^{*)}	at 3 A: any at 6 A: 36 ^{*)} at 10 A: 36 ^{*)} at 16 A: 18 ^{*)} at 20 A: 6 ^{*)}	at 3 A: any at 6 A: any at 10 A: 32 ^{*)} at 16 A: 32 ^{*)} at 20 A: 22 ^{*)} at 25 A: 8 ^{*)}	at 3 A: any at 6 A: any at 10 A: any at 16 A: 24 ^{*)} at 20 A: 24 ^{*)} at 25 A: 24 ^{*)} at 35 A: 6 ^{*)}	at 3 A: any at 6 A: any at 10 A: any at 16 A: any at 20 A: 20 ^{*)} at 25 A: 20 ^{*)} at 35 A: 20 ^{*)} at 50 A: 4 ^{*)}

Note

Each inserted conductor and each internal connection conductor counts as a conductor. Jumpers and protective conductors do not count.

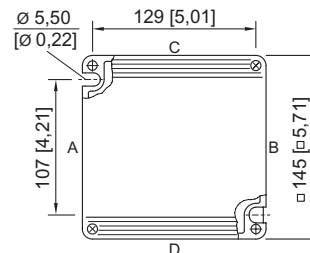
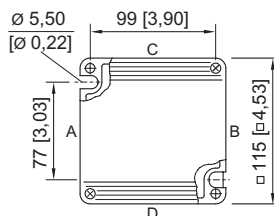
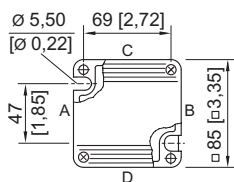
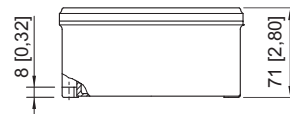
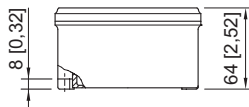
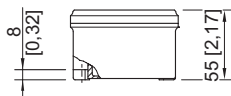
^{*)} When using this values, simultaneity factors or load factors must be taken into account according to IEC 61439. A mixed assembly with electrical circuits of different cross sections and currents is possible with proportional utilisation of the different tables of values.

Accessories

Figure	Description	Art. No.	Weight kg
Cable gland made of plastic			
	81617-M20-1304, Ex e Plastic, M20 x 1.5, cable outer diameter 4 to 13 mm Lot size 50 pieces	239156 ▲	0.013
	81617-M25-1707, Ex e Plastic, M25 x 1.5, cable outer diameter 7 to 17 mm Lot size 50 pieces	239157 ▲	0.019
	81618-M20-1304, Ex i Plastic, M20 x 1.5, cable outer diameter 4 to 13 mm Lot size 50 pieces	239164 ▲	0.013
Protective conductor terminal			
	USLKG 5 (clamping range 4 mm ²) Terminal enables connection of protective conductors to DIN rail. Colour green-yellow.	112760	0.012
Stopping plug			
	8290/3-M20 Plastic, M20 x 1.5 Lot size 100 pieces	285773 ■	0.500
	8290/3-M25 Plastic, M25 x 1.5 Lot size 100 pieces	285774 ■	0.700

Accessories			
Figure	Description	Art. No.	Weight kg
Terminal block			
	Phoenix Contact terminal block UT 4	113045	0.001
	Phoenix Contact terminal block UT 4-PE	113057	0.001
Brass plate with thread			
	8118 size 1, plate 37 x 30 mm [1.46 x 1.18"] 1 x M20 x 1.5 with M4 PE connection (left) for installation in enclosure size 1, size 2 and size 3	168913	-
	8118 size 1, plate 37 x 30 mm [1.46 x 1.18"] 1 x M20 x 1.5 with M4 PE connection (right) for installation in enclosure size 1, size 2 and size 3	168914	-
	8118 size 2, plate 56 x 40 mm [2.2 x 1.57"] 2 x M20 x 1.5 with M4 PE connection (right) for installation in enclosure size 2 and size 3	244072	-
	8118 size 2, plate 56 x 40 mm [2.2 x 1.57"] 1 x M25 x 1.5 with M4 PE connection (left) for installation in enclosure size 2 and size 3	211341	-
	8118 size 3, plate 74 x 40 mm [2.91 x 1.57"] 2 x M20 x 1.5 with M4 PE connection (centre) for installation in enclosure size 2 and size 3	168915	-
	8118 size 3/B, plate 74 x 40 mm [2.91 x 1.57"] 2 x M20 x 1.5 with M4 PE connection (centre) for installation in enclosure size 2 and size 3	244075	-
	8118 size 3, plate 74 x 40 mm [2.91 x 1.57"] 1 x M20 x 1.5 + 1 x M10 with M4 PE connection (centre) for installation in enclosure size 2 and size 3	211342	-
	8118 size 3, plate 74 x 40 mm [2.91 x 1.57"] 2 x M25 x 1.5 with M4 PE connection (centre) for installation in enclosure size 2 and size 3	168916	-
	8118 size 3, plate 74 x 40 mm [2.91 x 1.57"] 1 x M25 x 1.5 + 1 x M10 with M4 PE connection (centre) for installation in enclosure size 2 and size 3	211343	-
	8118 size 4, plate 95 x 46 mm [3.74 x 1.81"] 2 x M20 x 1.5 with M4 PE connection (centre) for installation in enclosure size 3	168917	-
	8118 size 4, plate 95 x 46 mm [3.74 x 1.81"] 2 x M25 x 1.5 with M4 PE connection (centre) for installation in enclosure size 3	168918	-
	8118; size 5, plate 107 x 46 mm [4.21 x 1.81"] 2 x M20 x 1.5 + 1 x M10 with M4 PE connection for installation in enclosure size 3	211344	-
	8118 size 5, plate 107 x 46 mm [4.21 x 1.81"] 2 x M25 x 1.5 + 1 x M10 with M4 PE connection (centre) for installation in enclosure size 3	211345	-

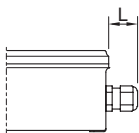
Lot size: Purchase order quantity in [pieces], the delivery quantity is automatically rounded to the lot size.



8118/1.
enclosure size 1

8118/2.
enclosure size 2

8118/3.
enclosure size 3



Length L

protrusion length for cable glands, Series 8161

in case of M20: 25 ... 31 [0,98 ... 1,22]

in case of M25: 27 ... 33 [1,06 ... 1,3]

in case of M32: 32 ... 39 [1,26 ... 1,54]

protrusion length for cable glands with strain relief,

Series HSK-K-MZ

in case of M25: 41 [1,61]